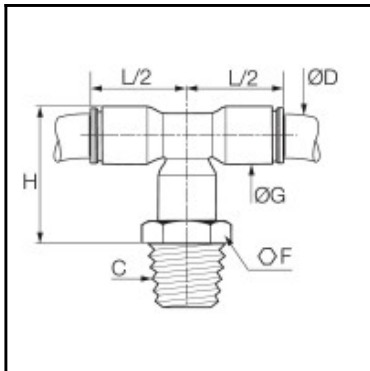


Datasheet of 6508 06 10WP2 T-stud coupling



Description

LIQUIFIT - water and food, T-stud coupling LIQUIfit®, Biobased raw materials, 2 x 6 mm - R1/8

Connection of 2 tubes at a 90° angle to a threaded port.

compact.

solid construction, aesthetic and unobtrusive for a better connection.

Full air flow.

100% leak-tested in production

LIQUIfit connection systems are **KTW - W270 - NSF and FDA** certified.

Details

ØD:	6 mm
C:	R1/8"
F:	13
G:	10,5
H:	28
Material seal:	EPDM
Material body:	Biobased raw materials
Material threaded fitting:	Biobased raw materials
Material toothed washer:	Stainless steel
Special feature:	schwenkbar
RoHS compliant:	Yes
Weight in kg:	0,008

Dimensions

ØD:	6 mm
C:	R1/8"
F:	13
G:	10,5
H:	28