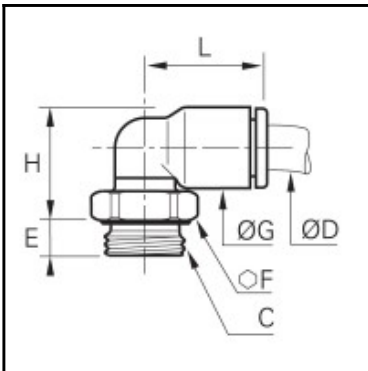


Datasheet of 3199 06 19 Stud elbow



Description

LF 3000 standard pneumatic, stud elbow, Engineered polymer, 6 mm - M5x0,8

Connection of tubing at 90° with a male thread. Tightened on the top of the fitting with a flat spanner or Allen key to facilitate assembly in tight spaces. solid construction, aesthetic and unobtrusive for a better connection. Full air flow. Individual unit quality control and dating in order to guarantee quality and traceability. Complies RoHS and ISO 14743.

Details

ØD:	6 mm
C:	M5x0,8
E:	3,5
F:	8
G:	10,5
H:	15,5
L:	16
Maximum working pressure in bar:	20
Material seal:	NBR
Material body:	Engineered polymer
Material threaded fitting:	Brass nickel plated
Material toothed washer:	Stainless steel
min. temperature in °C:	-20
max. temperature in °C:	80
Vacuum resistance in mm Hg:	755
Special feature:	schwenkbar
RoHS compliant:	Yes
Weight in kg:	0,003

Dimensions

ØD:	6 mm
C:	M5x0,8
E:	3,5
F:	8
G:	10,5
H:	15,5
L:	16