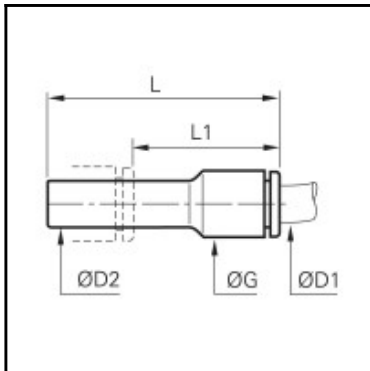


Datasheet of 3166 60 62 Reducer



Description

LF 3000 standard pneumatic, Reducer, Engineered polymer, 3/8 - 1/2

In line connection of tubing of smaller diameter with another push-in fitting. Solid construction, compact, aesthetic and unobtrusive for better connection. Full air flow. Individual unit quality control and dating in order to guarantee quality and traceability. Complies RoHS and ISO 14743.

Details

| | |
|----------------------------------|--------------------|
| ØD1: | 3/8" |
| ØD2: | 1/2" |
| G: | 16,002 |
| L: | 51,054 |
| L1: | 26,416 |
| Maximum working pressure in bar: | 20 |
| Material seal: | NBR |
| Material body: | Engineered polymer |
| Material toothed washer: | Stainless steel |
| min. temperature in °C: | -20 |
| max. temperature in °C: | 80 |
| Vacuum resistance in mm Hg: | 755 |
| RoHS compliant: | Yes |
| Weight in kg: | 0,005 |

Dimensions

| | |
|------|--------|
| ØD1: | 3/8" |
| ØD2: | 1/2" |
| G: | 16,002 |
| L: | 51,054 |
| L1: | 26,416 |