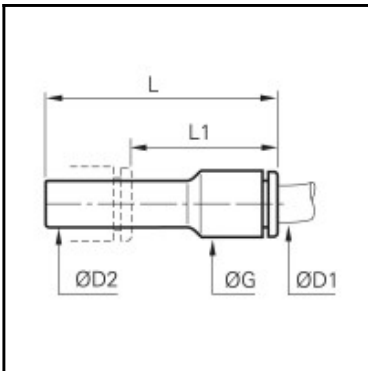


Datasheet of 3166 06 14 Reducer



Description

LF 3000 standard pneumatic, Reducer, Engineered polymer, 6 mm - 14 mm

In line connection of tubing of smaller diameter with another push-in fitting. Solid construction, compact, aesthetic and unobtrusive for better connection. Full air flow. Individual unit quality control and dating in order to guarantee quality and traceability. Complies RoHS and ISO 14743.

Details

ØD1:	6 mm
ØD2:	14 mm
G:	14,5
L:	48
L1:	23
Maximum working pressure in bar:	20
Material seal:	NBR
Material body:	Engineered polymer
Material toothed washer:	Stainless steel
min. temperature in °C:	-20
max. temperature in °C:	80
Vacuum resistance in mm Hg:	755
RoHS compliant:	Yes
Weight in kg:	0,006

Dimensions

ØD1:	6 mm
ØD2:	14 mm
G:	14,5
L:	48
L1:	23