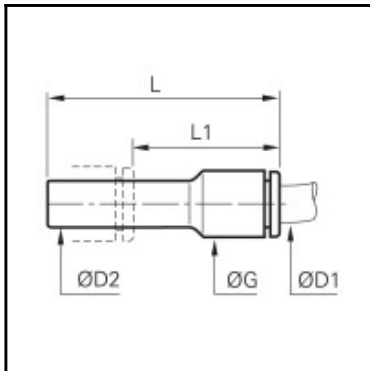


## Datasheet of 3166 04 56 Reducer



### Description

LF 3000 standard pneumatic, Reducer, Engineered polymer, 5/32 - 1/4

In line connection of tubing of smaller diameter with another push-in fitting. Solid construction, compact, aesthetic and unobtrusive for better connection. Full air flow. Individual unit quality control and dating in order to guarantee quality and traceability. Complies RoHS and ISO 14743.

### Details

ØD1:	5/32"
ØD2:	1/4"
G:	8,509
L:	37,592
L1:	22,987
Maximum working pressure in bar:	20
Material seal:	NBR
Material body:	Engineered polymer
Material toothed washer:	Stainless steel
min. temperature in °C:	-20
max. temperature in °C:	80
Vacuum resistance in mm Hg:	755
RoHS compliant:	Yes
Weight in kg:	0,001

### Dimensions

ØD1:	5/32"
ØD2:	1/4"
G:	8,509
L:	37,592
L1:	22,987