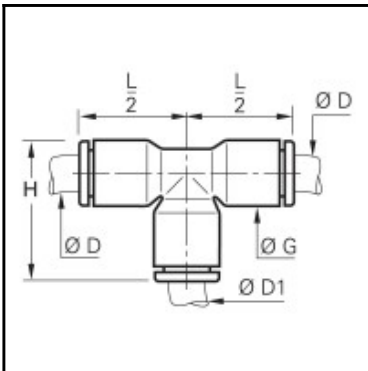


Datasheet of 3104 08 00 Equal and unequal tee



Description

LF 3000 standard pneumatic, Equal and unequal tee, Engineered polymer, 2 x 8 mm -

Connection at a 90° angle of 3 tubes of equal or different diameters. Solid construction, compact, aesthetic and unobtrusive for better connection. Full air flow. Individual unit quality control and dating in order to guarantee quality and traceability. Complies RoHS and ISO 14743.

Details

| | |
|----------------------------------|--------------------|
| ØD: | 8 mm |
| ØD1: | 8 mm |
| G: | 13,5 |
| H: | 29,5 |
| Maximum working pressure in bar: | 20 |
| Material seal: | NBR |
| Material body: | Engineered polymer |
| Material toothed washer: | Stainless steel |
| min. temperature in °C: | -20 |
| max. temperature in °C: | 80 |
| Vacuum resistance in mm Hg: | 755 |
| RoHS compliant: | Yes |
| Weight in kg: | 0,006 |

Dimensions

| | |
|------|------|
| ØD: | 8 mm |
| ØD1: | 8 mm |
| G: | 13,5 |
| H: | 29,5 |