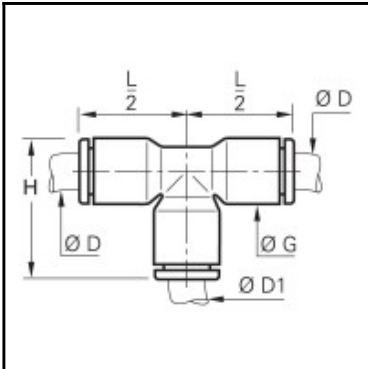


Datasheet of 3104 06 00 Equal and unequal tee



Description

LF 3000 standard pneumatic, Equal and unequal tee, Engineered polymer, 2 x 6 mm -

Connection at a 90° angle of 3 tubes of equal or different diameters. Solid construction, compact, aesthetic and unobtrusive for better connection. Full air flow. Individual unit quality control and dating in order to guarantee quality and traceability. Complies RoHS and ISO 14743.

Details

ØD:	6 mm
ØD1:	6 mm
G:	10,5
H:	22,5
Maximum working pressure in bar:	20
Material seal:	NBR
Material body:	Engineered polymer
Material toothed washer:	Stainless steel
min. temperature in °C:	-20
max. temperature in °C:	80
Vacuum resistance in mm Hg:	755
RoHS compliant:	Yes
Weight in kg:	0,003

Dimensions

ØD:	6 mm
ØD1:	6 mm
G:	10,5
H:	22,5