

Datasheet of ET13/04DX Threaded nozzle with bulkhead fitting



Description

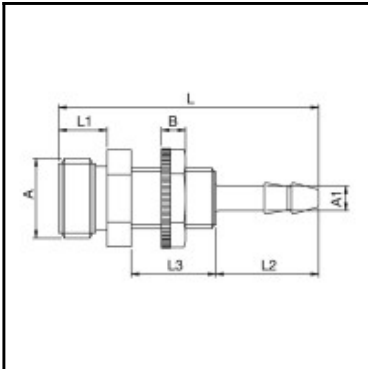
Threaded nozzle with bulkhead fitting, POM, G 1/4, 4 mm

Threaded nozzle with bulkhead fitting - POM - G 1/4, 4 mm

Details

Material:	POM
Working pressure:	0 up to 10 bar
Working temperature:	-20°C up to +80°C
Weight in kg:	0,0032

Dimensions



Connection 1:	Male thread G 1/4"
Connection 2:	Hose tail 4 mm
Connection A:	G 1/4
Connection A1:	4 mm
B mm:	4
G mm:	M 10x1
L mm:	43
L1 mm:	7
L2 mm:	8
L3 mm:	14
SW mm:	14
SW1 mm:	14