

Datasheet of ET13/06FX Threaded nozzle with bulkhead fitting



Description

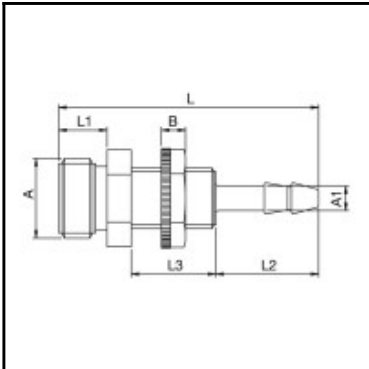
Threaded nozzle with bulkhead fitting, PVDF, G 1/4, 6 mm

Threaded nozzle with bulkhead fitting - PVDF - G 1/4, 6 mm

Details

Material:	PVDF
Working pressure:	0 up to 8 bar
Working temperature:	-20°C up to +120°C
Weight in kg:	0,0053

Dimensions



Connection 1:	Male thread G 1/4"
Connection 2:	Hose tail 6 mm
Connection A:	G 1/4
Connection A1:	6 mm
B mm:	4
G mm:	M 12x1
L mm:	43
L1 mm:	8
L2 mm:	8
L3 mm:	14
SW mm:	14
SW1 mm:	17