

## Datasheet of WS13N 90° elbow



### Description

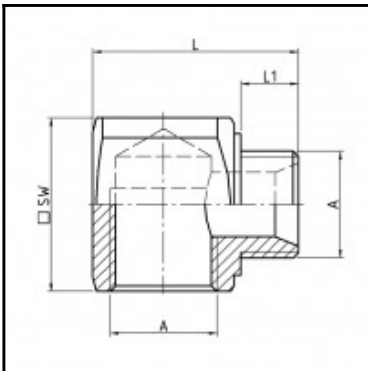
90° Elbow, brass nickel plated, G 1/4

90° Elbow - brass nickel plated - G 1/4

### Details

Material:	Brass nickel plated
Working pressure:	0 up to 70 bar
Working temperature:	-40°C up to +200°C
Weight in kg:	0,0639

### Dimensions



Connection 1:	Female thread G 1/4"
Connection 2:	Male thread G 1/4"
Connection A:	G 1/4
L mm:	29
L1 mm:	9
SW mm:	22