

Datasheet of WS10N 90° elbow



Description

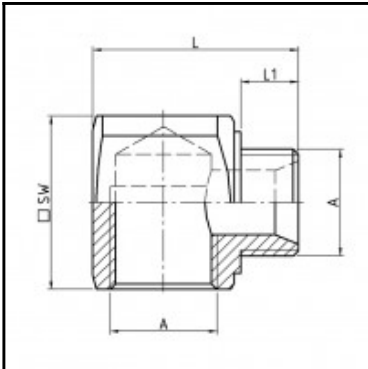
90° Elbow, brass nickel plated, G 1/8

90° Elbow - brass nickel plated - G 1/8

Details

Material:	Brass nickel plated
Working pressure:	0 up to 70 bar
Working temperature:	-40°C up to +200°C
Weight in kg:	0,0303

Dimensions



Connection 1:	Female thread G 1/8"
Connection 2:	Male thread G 1/8"
Connection A:	G 1/8
L mm:	24
L1 mm:	7
SW mm:	16