

Datasheet of WS05 90° elbow



Description

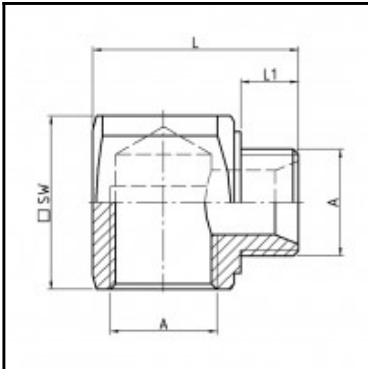
90° Elbow, brass, M 5

90° Elbow - brass - M 5

Details

Material:	Brass
Working pressure:	0 up to 70 bar
Working temperature:	-40°C up to +200°C
Weight in kg:	0,0069

Dimensions



Connection 1:	Female thread M 5
Connection 2:	Male thread M 5
Connection A:	M 5
L mm:	15
L1 mm:	5
SW mm:	10