

Datasheet of RK21/26 Reducer, short



Description

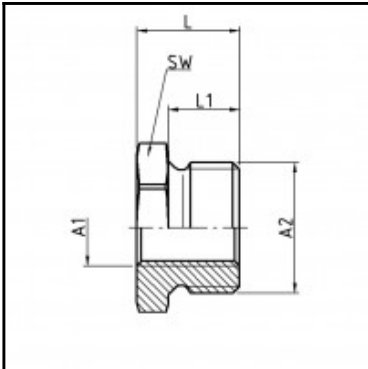
Reducing bush, short, brass, G 1/2 i. x G 3/4 o.

Reducing bush, short - brass - G 1/2 i. x G 3/4 o.

Details

Material:	Brass
Working pressure:	0 up to 70 bar
Working temperature:	-40°C up to +200°C
Weight in kg:	0,0613

Dimensions



Connection 1:	Female thread G 1/2"
Connection 2:	Male thread G 3/4"
Connection A1:	G 1/2 i.
Connection A2:	G 3/4
L mm:	20,5
L1 mm:	12,5
SW mm:	32