

Datasheet of RK10/13 Reducer, short



Description

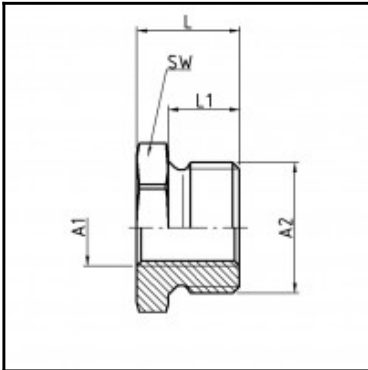
Reducing bush, short, brass, G 1/8 i. x G 1/4 o.

Reducing bush, short - brass - G 1/8 i. x G 1/4 o.

Details

| | |
|----------------------|--------------------|
| Material: | Brass |
| Working pressure: | 0 up to 70 bar |
| Working temperature: | -40°C up to +200°C |
| Weight in kg: | 0,0085 |

Dimensions



| | |
|----------------|----------------------|
| Connection 1: | Female thread G 1/8" |
| Connection 2: | Male thread G 1/4" |
| Connection A1: | G 1/8 i. |
| Connection A2: | G 1/4 |
| L mm: | 12,5 |
| L1 mm: | 8,5 |
| SW mm: | 17 |