

Datasheet of MU26N Sleeve



Description

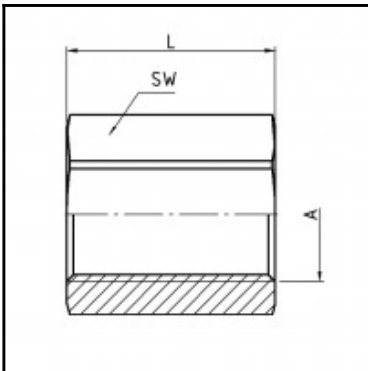
Sleeve, brass nickel plated, G 3/4

Sleeve - brass nickel plated - G 3/4

Details

Material:	Brass nickel plated
Working pressure:	0 up to 70 bar
Working temperature:	-40°C up to +200°C
Weight in kg:	0,1127

Dimensions



Connection 1:	Female thread G 3/4"
Connection 2:	Female thread G 3/4"
Connection A:	G 3/4
L mm:	36
SW mm:	32