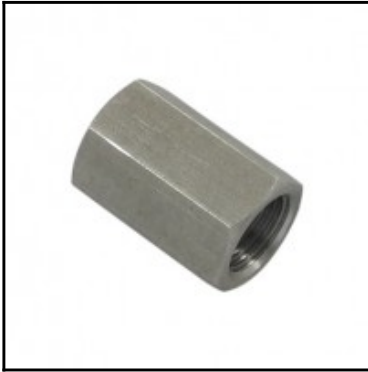


Datasheet of MU17E Sleeve



Description

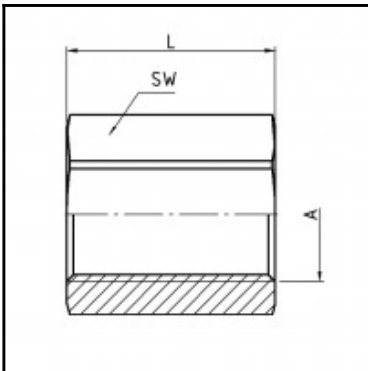
Sleeve, stainless steel AISI 316 L, G 3/8

Sleeve - stainless steel AISI 316 L - G 3/8

Details

Material:	stainless steel AISI 316 L
Working pressure:	0 up to 70 bar
Working temperature:	-40°C up to +200°C
Weight in kg:	0,036

Dimensions



Connection 1:	Female thread G 3/8"
Connection 2:	Female thread G 3/8"
Connection A:	G 3/8
L mm:	26
SW mm:	22