

Datasheet of MU13N Sleeve



Description

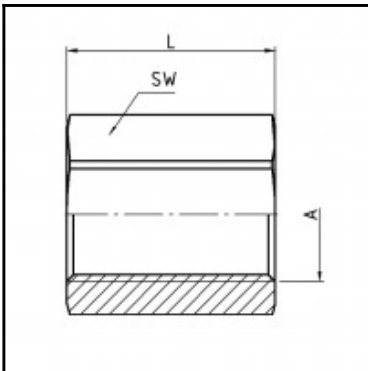
Sleeve, brass nickel plated, G 1/4

Sleeve - brass nickel plated - G 1/4

Details

Material:	Brass nickel plated
Working pressure:	0 up to 70 bar
Working temperature:	-40°C up to +200°C
Weight in kg:	0,0277

Dimensions



Connection 1:	Female thread G 1/4"
Connection 2:	Female thread G 1/4"
Connection A:	G 1/4
L mm:	26
SW mm:	17