

## Datasheet of MU13 Sleeve



### Description

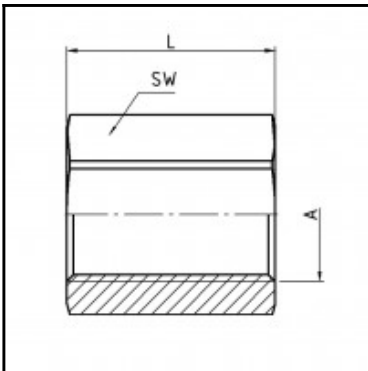
Sleeve, brass, G 1/4

Sleeve - brass - G 1/4

### Details

Material:	Brass
Working pressure:	0 up to 70 bar
Working temperature:	-40°C up to +200°C
Weight in kg:	0,0277

### Dimensions



Connection 1:	Female thread G 1/4"
Connection 2:	Female thread G 1/4"
Connection A:	G 1/4
L mm:	26
SW mm:	17