

Datasheet of MU10R Sleeve



Description

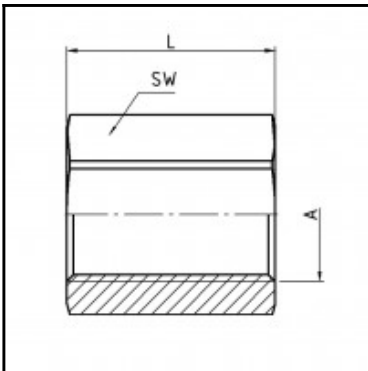
Sleeve, stainless steel AISI 303, G 1/8

Sleeve - stainless steel AISI 303 - G 1/8

Details

Material:	stainless steel AISI 303
Working pressure:	0 up to 70 bar
Working temperature:	-40°C up to +200°C
Weight in kg:	0,017

Dimensions



Connection 1:	Female thread G 1/8"
Connection 2:	Female thread G 1/8"
Connection A:	G 1/8
L mm:	22
SW mm:	14