

## Datasheet of MU10 Sleeve



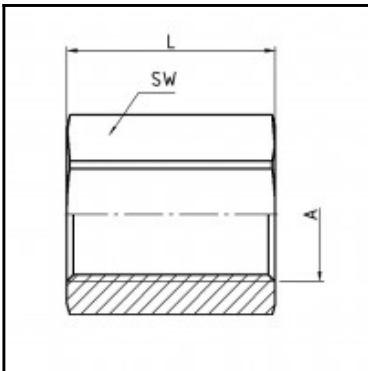
### Description

Sleeve, brass, G 1/8

Sleeve - brass - G 1/8

### Details

Material:	Brass
Working pressure:	0 up to 70 bar
Working temperature:	-40°C up to +200°C
Weight in kg:	0,0187
Mould coupling:	No



### Dimensions

Connection 1:	Female thread G 1/8"
Connection 2:	Female thread G 1/8"
Connection A:	G 1/8
L mm:	22
SW mm:	14