

Datasheet of MU05R Sleeve



Description

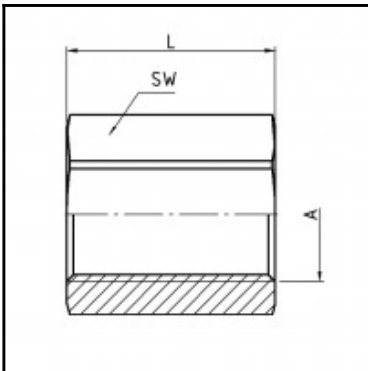
Sleeve, stainless steel AISI 303, M 5

Sleeve - stainless steel AISI 303 - M 5

Details

Material:	stainless steel AISI 303
Working pressure:	0 up to 70 bar
Working temperature:	-40°C up to +200°C
Weight in kg:	0,0035

Dimensions



Connection 1:	Female thread M 5
Connection 2:	Female thread M 5
Connection A:	M 5
L mm:	12
SW mm:	8