

## Datasheet of LD33/33K Adjustable nipple



### Description

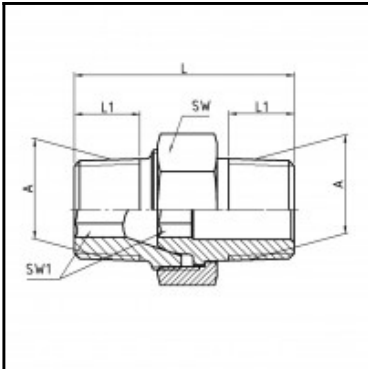
Male x male nipple adjustable, brass, R 1 x R 1

Male x male nipple adjustable - brass - R 1 x R 1

### Details

Material:	Brass
Working pressure:	0 up to 70 bar
Working temperature:	-40°C up to +200°C
Weight in kg:	0,37

### Dimensions



Connection 1:	Male thread R 1"
Connection 2:	Male thread R 1"
Connection A:	R 1
L mm:	64
L1 mm:	26
SW mm:	46
SW1 mm:	19