

Datasheet of LD21/21K Adjustable nipple



Description

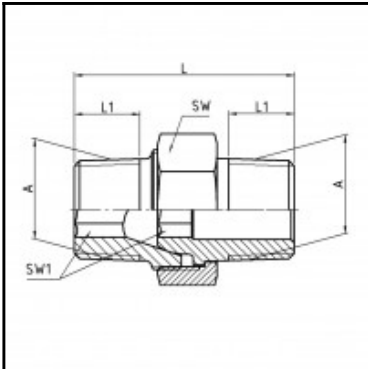
Male x male nipple adjustable, brass, R 1/2 x R 1/2

Male x male nipple adjustable - brass - R 1/2 x R 1/2

Details

| | |
|----------------------|--------------------|
| Material: | Brass |
| Working pressure: | 0 up to 70 bar |
| Working temperature: | -40°C up to +200°C |
| Weight in kg: | 0,0875 |

Dimensions



| | |
|---------------|--------------------|
| Connection 1: | Male thread R 1/2" |
| Connection 2: | Male thread R 1/2" |
| Connection A: | R 1/2 |
| L mm: | 44,5 |
| L1 mm: | 12,5 |
| SW mm: | 27 |
| SW1 mm: | 12 |