

Datasheet of LD17/17K Adjustable nipple



Description

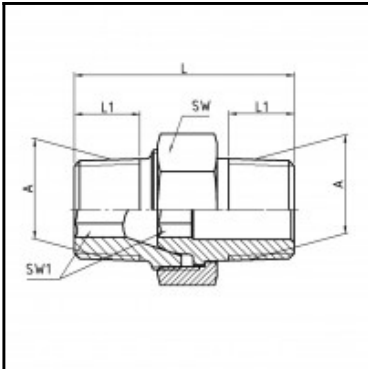
Male x male nipple adjustable, brass, R 3/8 x R 3/8

Male x male nipple adjustable - brass - R 3/8 x R 3/8

Details

Material:	Brass
Working pressure:	0 up to 70 bar
Working temperature:	-40°C up to +200°C
Weight in kg:	0,0549

Dimensions



Connection 1:	Male thread R 3/8"
Connection 2:	Male thread R 3/8"
Connection A:	R 3/8
L mm:	37
L1 mm:	11
SW mm:	22
SW1 mm:	8