

## Datasheet of LD10/10K Adjustable nipple



### Description

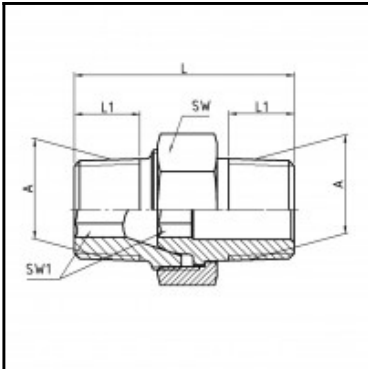
Male x male nipple adjustable, brass, R 1/8 x R 1/8

Male x male nipple adjustable - brass - R 1/8 x R 1/8

### Details

Material:	Brass
Working pressure:	0 up to 70 bar
Working temperature:	-40°C up to +200°C
Weight in kg:	0,0167

### Dimensions



Connection 1:	Male thread R 1/8"
Connection 2:	Male thread R 1/8"
Connection A:	R 1/8
L mm:	27
L1 mm:	7
SW mm:	15
SW1 mm:	5