

## Datasheet of DN21/26 Double nipple



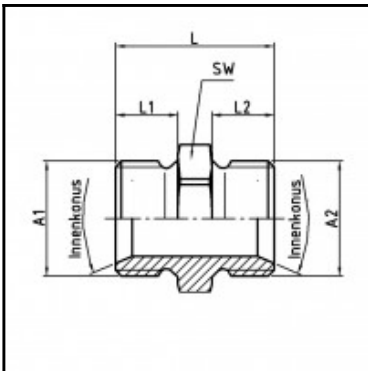
### Description

Male x male nipple, brass, G 1/2 x G 3/4

Male x male nipple - brass - G 1/2 x G 3/4

### Details

Material:	Brass
Working pressure:	0 up to 70 bar
Working temperature:	-40°C up to +200°C
Special feature:	with inner cone 45°
Weight in kg:	0,11



### Dimensions

Connection 1:	Male thread G 1/2"
Connection 2:	Male thread G 3/4"
Connection A1:	G 1/2
Connection A2:	G 3/4
L mm:	31,5
L1 mm:	11
L2 mm:	12,5
SW mm:	32