

Datasheet of DN21/21N Double nipple



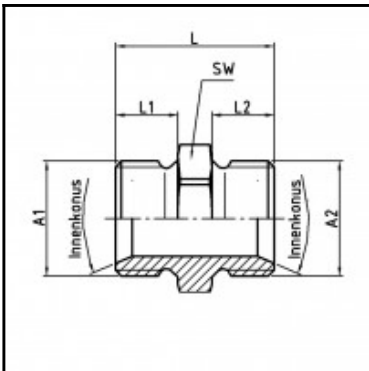
Description

Male x male nipple, brass nickel plated, G 1/2 x G 1/2

Male x male nipple - brass nickel plated - G 1/2 x G 1/2

Details

Material:	Brass nickel plated
Working pressure:	0 up to 70 bar
Working temperature:	-40°C up to +200°C
Special feature:	with inner cone 45°
Weight in kg:	0,0493



Dimensions

Connection 1:	Male thread G 1/2"
Connection 2:	Male thread G 1/2"
Connection A1:	G 1/2
Connection A2:	G 1/2
L mm:	30
L1 mm:	12
L2 mm:	12
SW mm:	24