

## Datasheet of DN17/21DX Double nipple



### Description

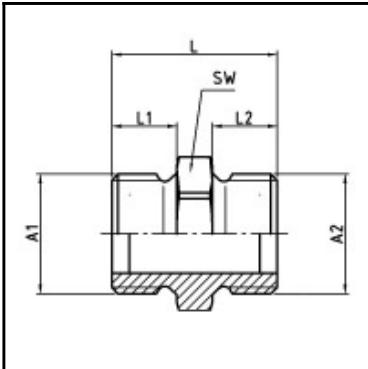
Male x male nipple, POM, G 3/8 x G 1/2

Male x male nipple - POM - G 3/8 x G 1/2

### Details

Material:	POM
Working pressure:	0 up to 10 bar
Working temperature:	-20°C up to +80°C
Weight in kg:	0,0075

### Dimensions



Connection 1:	Male thread G 3/8"
Connection 2:	Male thread G 1/2"
Connection A:	G 3/8
Connection A1:	G 1/2
L mm:	31,5
L1 mm:	9
L2 mm:	12
SW mm:	21