

Datasheet of DN17/13DX Double nipple



Description

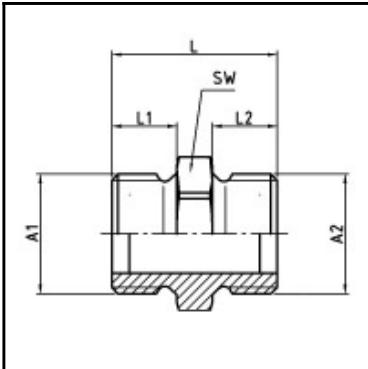
Male x male nipple, POM, G 3/8 x G 1/4

Male x male nipple - POM - G 3/8 x G 1/4

Details

Material:	POM
Working pressure:	0 up to 10 bar
Working temperature:	-20°C up to +80°C
Weight in kg:	0,0054

Dimensions



Connection 1:	Male thread G 3/8"
Connection 2:	Male thread G 1/4"
Connection A:	G 3/8
Connection A1:	G 1/4
L mm:	28,5
L1 mm:	9
L2 mm:	9
SW mm:	17