

Datasheet of DN13/21 Double nipple



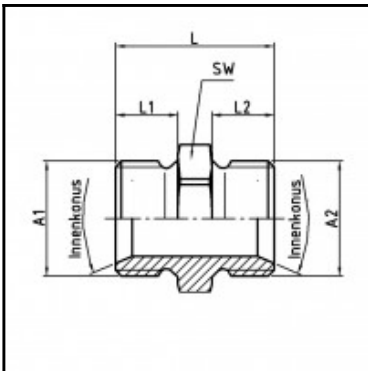
Description

Male x male nipple, brass, G 1/4 x G 1/2

Male x male nipple - brass - G 1/4 x G 1/2

Details

Material:	Brass
Working pressure:	0 up to 70 bar
Working temperature:	-40°C up to +200°C
Special feature:	with inner cone 45°
Weight in kg:	0,0481



Dimensions

Connection 1:	Male thread G 1/4"
Connection 2:	Male thread G 1/2"
Connection A1:	G 1/4
Connection A2:	G 1/2
L mm:	25,5
L1 mm:	9
L2 mm:	11,5
SW mm:	24