

Datasheet of DN13/17V Double nipple



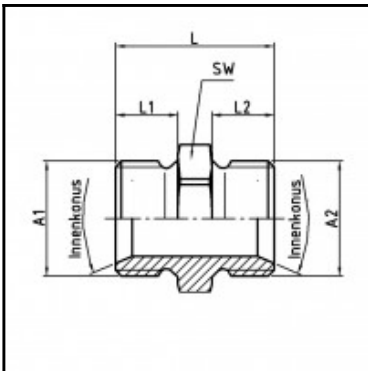
Description

Male x male nipple, brass, G 1/4 x G 3/8 verl.

Male x male nipple - brass - G 1/4 x G 3/8 verl.

Details

| | |
|----------------------|---|
| Material: | Brass |
| Working pressure: | 0 up to 70 bar |
| Working temperature: | -40°C up to +200°C |
| Special feature: | with inner cone 45°, only usable with DIN threaded nut UR17 |
| Weight in kg: | 0,0284 |



Dimensions

| | |
|----------------|--------------------|
| Connection 1: | Male thread G 1/4" |
| Connection 2: | Male thread G 3/8" |
| Connection A1: | G 1/4 |
| Connection A2: | G 3/8 |
| L mm: | 25 |
| L1 mm: | 9 |
| L2 mm: | 11 |
| SW mm: | 19 |