

Datasheet of DN13/13K Double nipple



Description

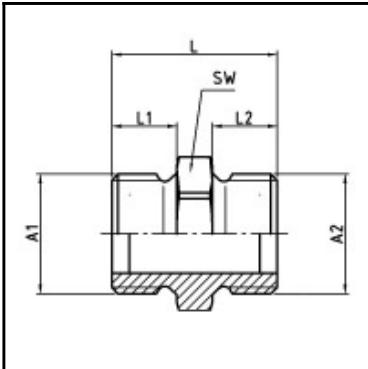
Male x male nipple, brass, R 1/4 x R 1/4 kon

Male x male nipple - brass - R 1/4 x R 1/4 kon

Details

Material:	Brass
Working pressure:	0 up to 70 bar
Working temperature:	-40°C up to +200°C
Weight in kg:	0,016

Dimensions



Connection 1:	Male thread R 1/4"
Connection 2:	Male thread R 1/4"
Connection A1:	R 1/4
Connection A2:	R 1/4
L mm:	30
L1 mm:	12,5
L2 mm:	12,5
SW mm:	14