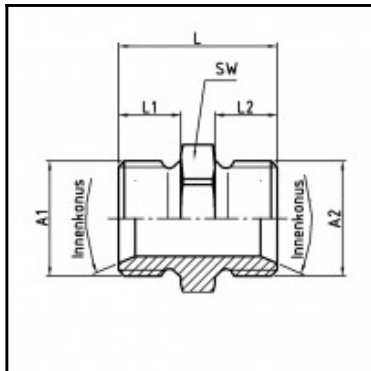


Datasheet of DN10/17N Double nipple



Description

Male x male nipple, brass nickel plated, G 1/8 x G 3/8

Male x male nipple - brass nickel plated - G 1/8 x G 3/8

Details

Material:	Brass nickel plated
Working pressure:	0 up to 70 bar
Working temperature:	-40°C up to +200°C
Special feature:	with inner cone 45°, only usable with shortened threaded nut UR17S
Weight in kg:	0,0234

Dimensions

Connection 1:	Male thread G 1/8"
Connection 2:	Male thread G 3/8"
Connection A1:	G 1/8
Connection A2:	G 3/8
L mm:	21
L1 mm:	7
L2 mm:	9
SW mm:	19