

Datasheet of DN10/13E Double nipple



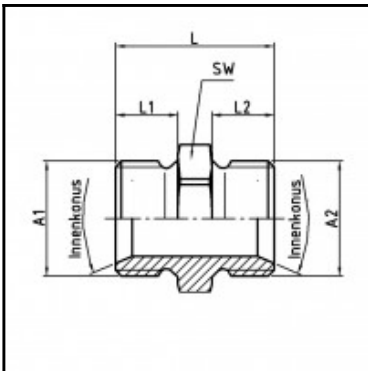
Description

Male x male nipple, stainless steel AISI 316 L, G 1/8 x G 1/4

Male x male nipple - stainless steel AISI 316 L - G 1/8 x G 1/4

Details

Material:	stainless steel AISI 316 L
Working pressure:	0 up to 70 bar
Working temperature:	-40°C up to +200°C
Special feature:	with inner cone 45°
Weight in kg:	0,0147



Dimensions

Connection 1:	Male thread G 1/8"
Connection 2:	Male thread G 1/4"
Connection A1:	G 1/8
Connection A2:	G 1/4
L mm:	20
L1 mm:	7
L2 mm:	9
SW mm:	17