

Datasheet of DN10/10R Double nipple



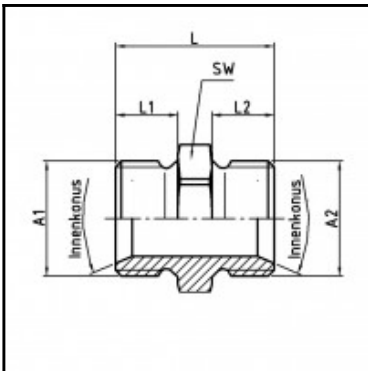
Description

Male x male nipple, stainless steel AISI 303, G 1/8 x G 1/8

Male x male nipple - stainless steel AISI 303 - G 1/8 x G 1/8

Details

Material:	stainless steel AISI 303
Working pressure:	0 up to 70 bar
Working temperature:	-40°C up to +200°C
Special feature:	with inner cone 45°
Weight in kg:	0,0186



Dimensions

Connection 1:	Male thread G 1/8"
Connection 2:	Male thread G 1/8"
Connection A1:	G 1/8
Connection A2:	G 1/8
L mm:	19
L1 mm:	7
L2 mm:	7
SW mm:	14