

## Datasheet of DN05/13 Double nipple



### Description

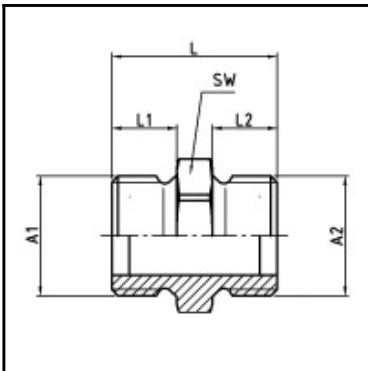
Male x male nipple, brass, M 5 x G 1/4

Male x male nipple - brass - M 5 x G 1/4

### Details

Material:	Brass
Working pressure:	0 up to 70 bar
Working temperature:	-40°C up to +200°C
Weight in kg:	0,016

### Dimensions



Connection 1:	Male thread M 5
Connection 2:	Male thread G 1/4"
Connection A1:	M 5
Connection A2:	G 1/4
L mm:	19
L1 mm:	5
L2 mm:	9
SW mm:	17