

## Datasheet of DN05/10R Double nipple



### Description

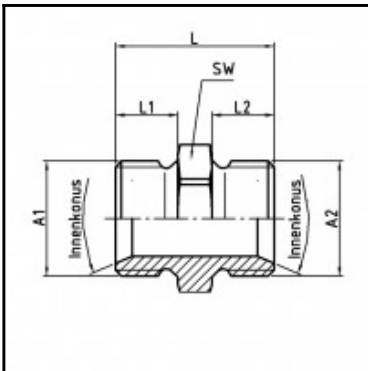
Male x male nipple, stainless steel AISI 303, M 5 x G 1/8

Male x male nipple - stainless steel AISI 303 - M 5 x G 1/8

### Details

Material:	stainless steel AISI 303
Working pressure:	0 up to 70 bar
Working temperature:	-40°C up to +200°C
Weight in kg:	0,009

### Dimensions



Connection 1:	Male thread M 5
Connection 2:	Male thread G 1/8"
Connection A1:	M 5
Connection A2:	G 1/8
L mm:	17
L1 mm:	5
L2 mm:	7
SW mm:	14