

Datasheet of DN05/05 Double nipple



Description

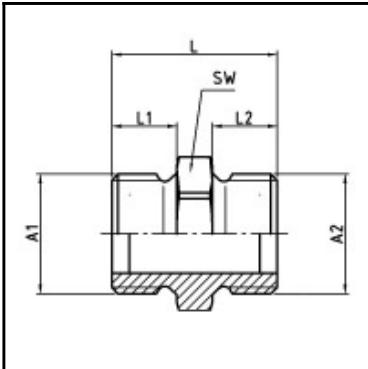
Male x male nipple, brass, M 5 x M 5

Male x male nipple - brass - M 5 x M 5

Details

Material:	Brass
Working pressure:	0 up to 70 bar
Working temperature:	-40°C up to +200°C
Weight in kg:	0,0017

Dimensions



Connection 1:	Male thread M 5
Connection 2:	Male thread M 5
Connection A1:	M 5
Connection A2:	M 5
L mm:	13
L1 mm:	5
L2 mm:	5
SW mm:	7