

## Datasheet of STP21/06 Hose tail, short



### Description

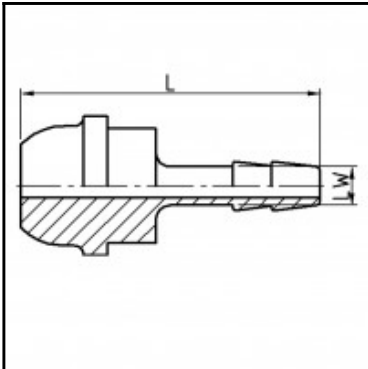
Hose tail, short, brass, 6 mm for G 1/2

Hose tail, short - brass - 6 mm for G 1/2

### Details

Material:	Brass
Working pressure:	0 up to 35 bar
Working temperature:	-40°C up to +100°C
Weight in kg:	0,0257

### Dimensions



Connection 1:	Hose tail 6 mm
Connection 2:	Hose tail 6 mm
L mm:	38
LW mm:	6