

Datasheet of STD17/09 Hose tail, long



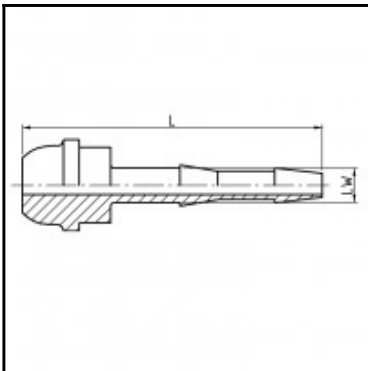
Description

Hose tail, long, brass, 9 mm for G 3/8

Hose tail, long - brass - 9 mm for G 3/8

Details

Material:	Brass
Working pressure:	0 up to 35 bar
Working temperature:	-40°C up to +100°C
Additional information:	according to DIN EN 560
Weight in kg:	0,0206



Dimensions

Connection 1:	Hose tail 9 mm
Connection 2:	Hose tail 9 mm
L mm:	47,5
LW mm:	9