

## Datasheet of STD13/06 Hose tail, long



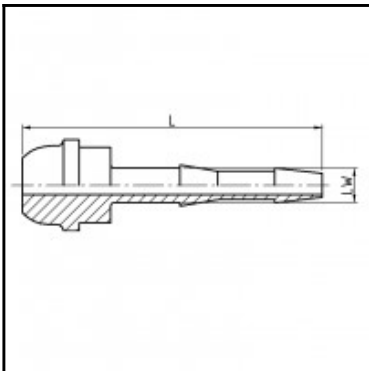
### Description

Hose tail, long, brass, 6 mm for G 1/4

Hose tail, long - brass - 6 mm for G 1/4

### Details

Material:	Brass
Working pressure:	0 up to 35 bar
Working temperature:	-40°C up to +100°C
Additional information:	according to DIN EN 560
Weight in kg:	0,012



### Dimensions

Connection 1:	Hose tail 6 mm
Connection 2:	Hose tail 6 mm
L mm:	47
LW mm:	6