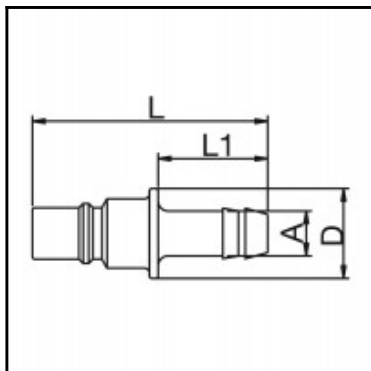


Datasheet of 48SFTF13FVXG Plug color coded



Description

Plug straight-through, color coded (G = green), hose barb 13mm (1/2), nominal diameter 7, <8 bar, PVDF, seal FKM

Coupling series made of POM and PVDF has been developed for use in the medical, chemical, food handling, pharmaceutical and laboratory technology industries. The system is also available in a solid plastic design (RectuChem+). Here the metal springs are replaced by springs made of PEEK, an extremely resistant synthetic material.

Details

| | |
|---|---|
| Series: | 48 |
| Series long: | 48SF |
| Bore in mm: | 7 |
| Bore area in mm²: | 38 |
| Advantages: | Coupling system with single-hand operation. The color coding of the coupling and plug offers a guarantee for avoiding mix-ups between media when coupling. The coupling is also available with no valve for a straightthrough system. |
| Working pressure: | PB = 8 bar (PVDF with springs made of steel) PB = 8 bar (PVDF with springs made of PEEK), maximum static working pressure with safety factor 4 to 1. |
| Working temperature: | -20°C up to +120°C depending on the medium. |
| Shut-Off: | Plug Straight-Through |
| Connection: | Hose barb 13mm LW(1/2") |
| Connection description: | Hose barb 13mm LW(1/2") |
| Connection type: | Hose barb |
| Material: | PVDF |
| Material description: | PVDF |
| Seal description: | Fluororubber |
| Surface: | blank finish |
| Coding: | G = green |
| Material seal: | Viton® |
| Weight in kg: | 0,0151 |
| Coded: | Yes |
| Self-venting coupling: | No |
| Safety locking system: | No |
| Single-hand operation: | Yes |
| Two-hand operation: | No |
| Ball locking: | No |
| Pin lock: | No |
| Ultra-FLO-valve: | No |
| Vacuum suitable: | Yes |
| Water-resistant: | Yes |
| Flat-sealing: | No |
| Suitable breath / respiratory protection: | No |
| Pressure eliminator: | No |
| Hydraulics: | No |
| Pneumatics: | Yes |
| Standard product: | No |
| Mould coupling: | No |

Dimensions

| | |
|---------------|-------|
| Connection A: | 13 mm |
| D mm: | 18 |
| L mm: | 50 |
| L1 mm: | 25 |