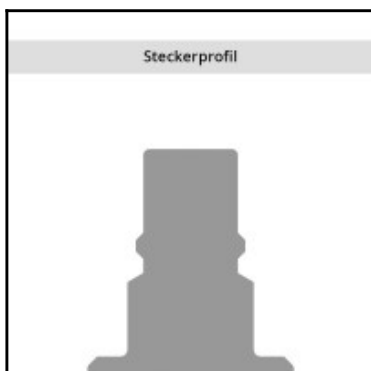
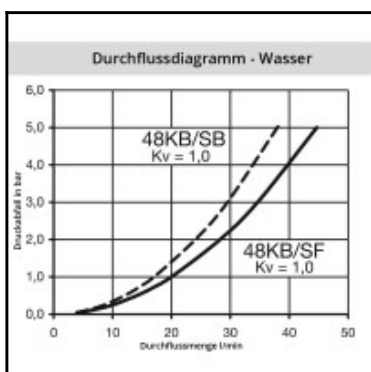
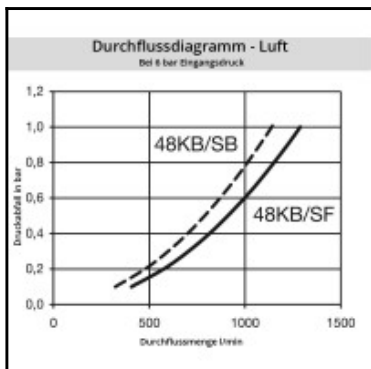
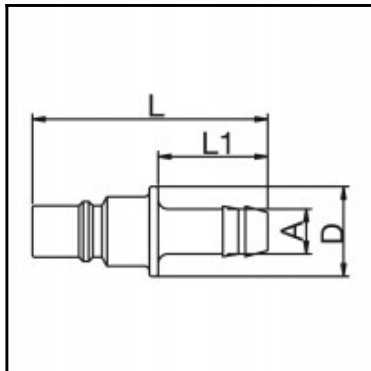


Datasheet of 48SFTF09DPXY Plug color coded



Description

Plug straight-through, color coded (Y = yellow), hose barb 9mm (3/8), nominal diameter 7, <10 bar, POM (Delrin), seal NBR

Coupling series made of POM and PVDF has been developed for use in the medical, chemical, food handling, pharmaceutical and laboratory technology industries. The system is also available in a solid plastic design (RectuChem+). Here the metal springs are replaced by springs made of PEEK, an extremely resistant synthetic material.

Details

Series:	48
Series long:	48SF
Bore in mm:	7
Bore area in mm²:	38
Advantages:	Coupling system with single-hand operation. The color coding of the coupling and plug offers a guarantee for avoiding mix-ups between media when coupling. The coupling is also available with no valve for a straightthrough system.
Working pressure:	PB = 10 bar (at 20°C) maximum static working pressure with safety factor 4 to 1.
Working temperature:	-20°C up to +80°C depending on the medium.
Shut-Off:	Plug Straight-Through
Connection:	Hose barb 9mm LW(3/8")
Connection description:	Hose barb 9mm LW(3/8")
Connection type:	Hose barb
Material:	POM (Delrin)
Material description:	POM (Delrin)
Seal description:	Nitrite-butadiene rubber
Surface:	blank finish
Coding:	Y = yellow
Material seal:	Perbunan®
Weight in kg:	0,0107
Coded:	Yes
Self-venting coupling:	No
Safety locking system:	No
Single-hand operation:	Yes
Two-hand operation:	No
Ball locking:	No
Pin lock:	No
Ultra-FLO-valve:	No
Vacuum suitable:	Yes
Water-resistant:	Yes
Flat-sealing:	No
Suitable breath / respiratory protection:	No
Pressure eliminator:	No
Hydraulics:	No
Pneumatics:	Yes
Standard product:	No
Mould coupling:	No

Dimensions

Connection A:	9 mm
D mm:	18
L mm:	47
L1 mm:	22