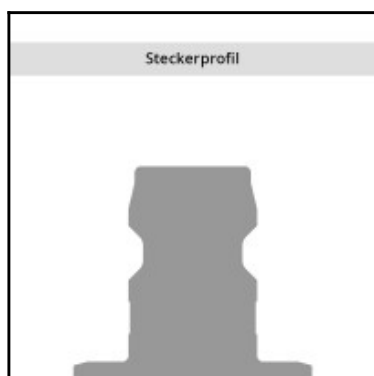
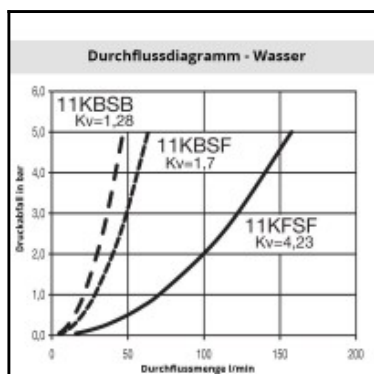
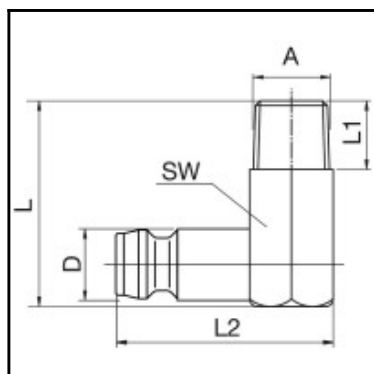


## Datasheet of 11SFAR14MXX Plug with male thread 90° angled



### Description

Plug straight-through, male thread 90° M 14 x 1,5, nominal diameter 9, <15 bar, brass

The 10, 11 and 12 Rectus Moldtite coupling series were especially developed for connecting coolant lines and injection moulds. These stand out for their convenient, singlehanded operation and a reliable O-ring seal. Widely used in Europe.

### Details

Series:	11
Series long:	11SF
Bore in mm:	9
Bore area in mm²:	63
Advantages:	Available in single shut-off, double shut-off or straightthrough versions also available with SAFE-LOCK™-technology. The straight-through couplings are equipped with nickel plated sleeves for quick and accurate visual differentiation. The angular connections prevent kinks from forming in the hose.
Working pressure:	PB = 15 bar maximum static working pressure with safety factor 4 to 1.
Working temperature:	-15°C up to +200°C (FKM) depending on the medium
Shut-Off:	Plug Straight-Through
Connection:	Male thread 90° angled M 14 x 1,5
Connection description:	Male thread 90° angled M 14 x 1,5
Connection type:	Male thread
Material:	Brass
Material description:	Brass CuZn39Pb3 2.0401 (except sleeve)
Surface:	blank finish
Weight in kg:	0,0413
Self-venting coupling:	No
Safety locking system:	No
Single-hand operation:	Yes
Two-hand operation:	No
Ball locking:	No
Pin lock:	No
Ultra-FLO-valve:	No
Vacuum suitable:	Yes
Water-resistant:	Yes
Flat-sealing:	No
Suitable breath / respiratory protection:	No
Pressure eliminator:	No
Hydraulics:	No
Pneumatics:	No
Standard product:	No
Mould coupling:	Yes

### Dimensions

Connection A:	M 14 x 1,5
D mm:	13,5
L mm:	34
L1 mm:	11
L2 mm:	32
SW mm:	15