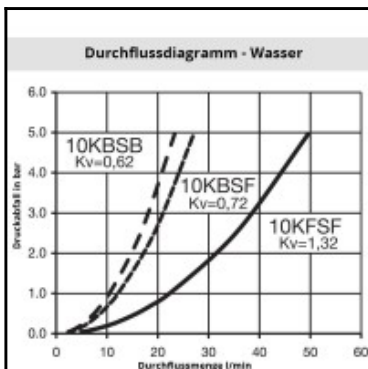
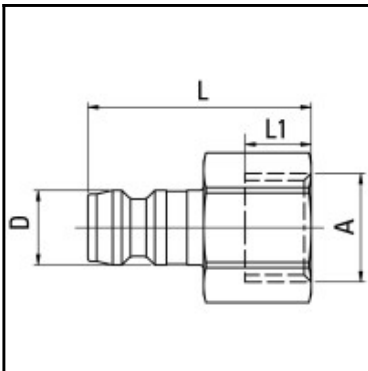


Datasheet of 10SFIW10MXN Plug with female thread



Description

Plug straight-through, female thread G 1/8, nominal diameter 6, <15 bar, brass nickel plated

The 10, 11 and 12 Rectus Moldtite coupling series were especially developed for connecting coolant lines and injection moulds. These stand out for their convenient, singlehanded operation and a reliable O-ring seal. Widely used in Europe.

Details

Series:	10
Series long:	10SF
Bore in mm:	6
Bore area in mm²:	30
Advantages:	Available in single shut-off, double shut-off or straightthrough versions also available with SAFE-LOCK™-technology. The straight-through couplings are equipped with nickel plated sleeves for quick and accurate visual differentiation. The angular connections prevent kinks from forming in the hose.
Working pressure:	PB = 15 bar maximum static working pressure with safety factor 4 to 1.
Working temperature:	-15°C up to +200°C (FKM) depending on the medium
Shut-Off:	Plug Straight-Through
Connection:	Female thread 1/8"
Connection description:	Female pipe thread of Whitworth form ISO 228 1/8"
Connection type:	Female thread
Material:	Brass nickel plated
Material description:	Brass CuZn39Pb3 2.0401 (except sleeve)
Surface:	nickel plated
Weight in kg:	0,0066
Self-venting coupling:	No
Safety locking system:	No
Single-hand operation:	Yes
Two-hand operation:	No
Ball locking:	No
Pin lock:	No
Ultra-FLO-valve:	No
Vacuum suitable:	Yes
Water-resistant:	Yes
Flat-sealing:	No
Suitable breath / respiratory protection:	No
Pressure eliminator:	No
Hydraulics:	No
Pneumatics:	No
Standard product:	No
Mould coupling:	Yes

Dimensions

Connection A:	G 1/8
D mm:	9
L mm:	24
L1 mm:	7
SW mm:	11