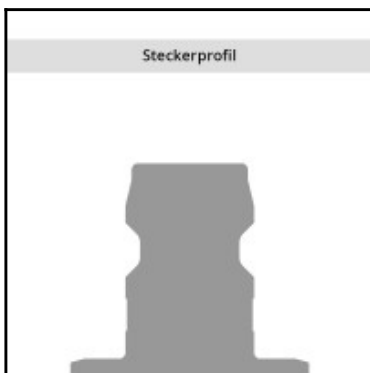
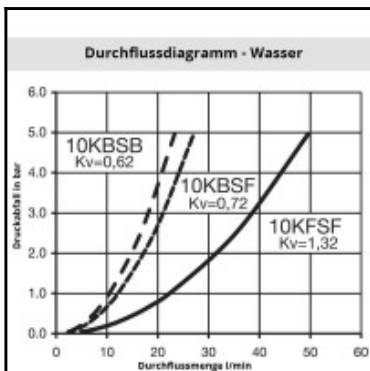
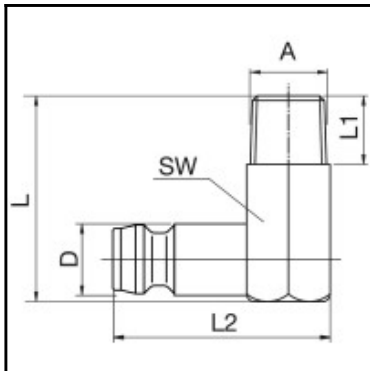


## Datasheet of 10SFAR13MXN Plug with male thread 90° angled



### Description

Plug straight-through, male thread 90° G 1/4, nominal diameter 6, <15 bar, brass nickel plated

The 10, 11 and 12 Rectus Moldtite coupling series were especially developed for connecting coolant lines and injection moulds. These stand out for their convenient, singlehanded operation and a reliable O-ring seal. Widely used in Europe.

### Details

Series:	10
Series long:	10SF
Bore in mm:	6
Bore area in mm²:	30
Advantages:	Available in single shut-off, double shut-off or straightthrough versions also available with SAFE-LOCK™-technology. The straight-through couplings are equipped with nickel plated sleeves for quick and accurate visual differentiation. The angular connections prevent kinks from forming in the hose.
Working pressure:	PB = 15 bar maximum static working pressure with safety factor 4 to 1.
Working temperature:	-15°C up to +200°C (FKM) depending on the medium
Shut-Off:	Plug Straight-Through
Connection:	Male thread 90° angled 1/4"
Connection description:	Male thread 90° angled 1/4"
Connection type:	Male thread
Material:	Brass nickel plated
Material description:	Brass CuZn39Pb3 2.0401 (except sleeve)
Surface:	nickel plated
Weight in kg:	0,0295
Self-venting coupling:	No
Safety locking system:	No
Single-hand operation:	Yes
Two-hand operation:	No
Ball locking:	No
Pin lock:	No
Ultra-FLO-valve:	No
Vacuum suitable:	Yes
Water-resistant:	Yes
Flat-sealing:	No
Suitable breath / respiratory protection:	No
Pressure eliminator:	No
Hydraulics:	No
Pneumatics:	No
Standard product:	No
Mould coupling:	Yes

### Dimensions

Connection A:	G 1/4
D mm:	9
L mm:	27
L1 mm:	9
L2 mm:	28,5
SW mm:	11