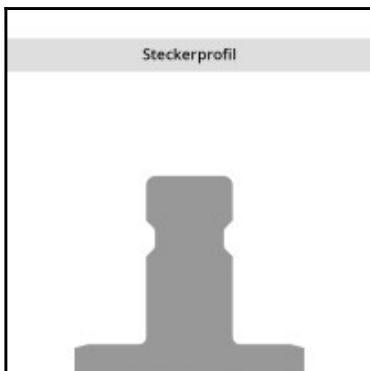
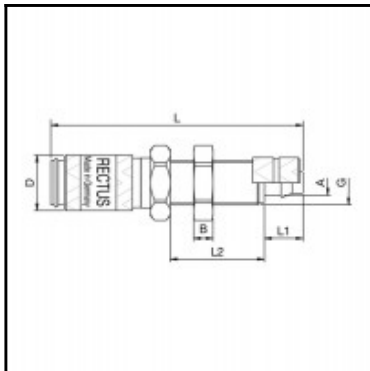


Datasheet of 20KFKS06MPN Quick coupling with panel mount



Description

Quick coupling straight-through, panel mount 4 x 6 mm, nominal diameter 2,7, <35 bar, brass nickel plated, seal NBR

Mini industrial coupling with internationally used profile. Frequent use in medical technology and chemistry/pharmacy. Coupling system with single-hand operation. High flow despite small dimensions plus many applications with a variety of medio.

Details

| | |
|---|--|
| Series: | 20 |
| Series long: | 20KF |
| Bore in mm: | 2,7 |
| Bore area in mm²: | 6 |
| Advantages: | One-hand operation. Small dimensions. |
| Compatibility: | RECTUS 91 |
| Working pressure: | 35 bar maximum static working pressure with safety factor 4 to 1. |
| Working temperature: | -20°C up to +100°C (NBR) -40°C up to +120/150°C (EPDM) -15°C up to +200°C (FKM) depending on the medium. |
| Shut-Off: | Quick coupling Straight-Through |
| Connection: | Panel mount 4 x 6 mm |
| Connection description: | Panel mount without spring guard 4 x 6 mm |
| Connection type: | Connection nut |
| Material: | Brass nickel plated |
| Material description: | Brass CuZn39Pb3 2.0401 (except sleeve) |
| Seal description: | Nitrite-butadiene rubber |
| Surface: | nickel plated |
| Material connection: | Brass nickel plated |
| Material valve body: | Brass nickel plated |
| Material sleeve: | Brass nickel plated |
| Material spring snap ring: | stainless steel AISI 301 |
| Material balls/pins: | Stainless steel AISI 420 |
| Material seal: | Perbunan® |
| Weight in kg: | 0,018 |
| Self-venting coupling: | No |
| Safety locking system: | No |
| Single-hand operation: | Yes |
| Two-hand operation: | No |
| Ball locking: | Yes |
| Pin lock: | No |
| Ultra-FLO-valve: | No |
| Vacuum suitable: | Yes |
| Water-resistant: | Yes |
| Flat-sealing: | No |
| Suitable breath / respiratory protection: | No |
| Pressure eliminator: | No |
| Hydraulics: | No |
| Pneumatics: | Yes |
| Standard product: | No |
| Mould coupling: | No |

Dimensions

| | |
|---------------|-----------|
| Connection A: | 4 x 6 mm |
| B mm: | 3 |
| D mm: | 10 |
| G mm: | M 8 x 0,5 |
| L mm: | 45 |
| L1 mm: | 7 |
| L2 mm: | 12 |
| SW mm: | 12 |
| SW1 mm: | 11 |