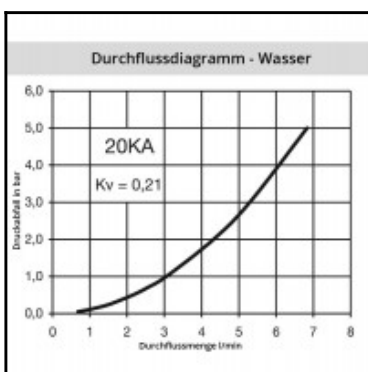
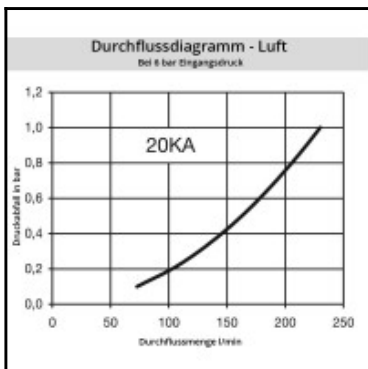
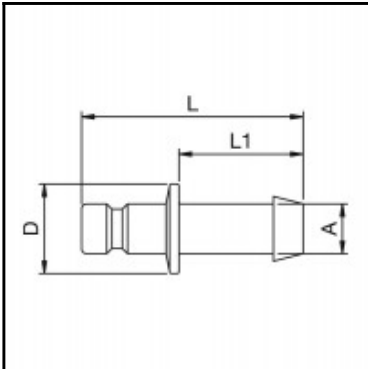


## Datasheet of 20SFTF03RXX Plug with hose barb



### Description

Plug straight-through, hose barb 3mm (1/8), nominal diameter 2,7, <35 bar, stainless steel AISI 303

Mini industrial coupling with internationally used profile. Frequent use in medical technology and chemistry/pharmacy. Coupling system with single-hand operation. High flow despite small dimensions plus many applications with a variety of media.

### Details

Series:	20
Series long:	20SF
Bore in mm:	2,7
Bore area in mm²:	6
Advantages:	One-hand operation. Small dimensions.
Compatibility:	RECTUS 91
Working pressure:	35 bar maximum static working pressure with safety factor 4 to 1.
Working temperature:	-20°C up to +100°C (NBR) -40°C up to +120/150°C (EPDM) -15°C up to +200°C (FKM) depending on the medium.
Shut-Off:	Plug Straight-Through
Connection:	Hose barb 3mm LW(1/8")
Connection description:	Hose barb 3mm LW(1/8")
Connection type:	Hose barb
Material:	stainless steel AISI 303
Material description:	stainless steel AISI 303
Surface:	blank finish
Weight in kg:	0,001
Self-venting coupling:	No
Safety locking system:	No
Single-hand operation:	Yes
Two-hand operation:	No
Ball locking:	No
Pin lock:	No
Ultra-FLO-valve:	No
Vacuum suitable:	Yes
Water-resistant:	Yes
Flat-sealing:	No
Suitable breath / respiratory protection:	No
Pressure eliminator:	No
Hydraulics:	No
Pneumatics:	Yes
Standard product:	No
Mould coupling:	No

### Dimensions

Connection A:	3 mm
D mm:	7
L mm:	24
L1 mm:	13