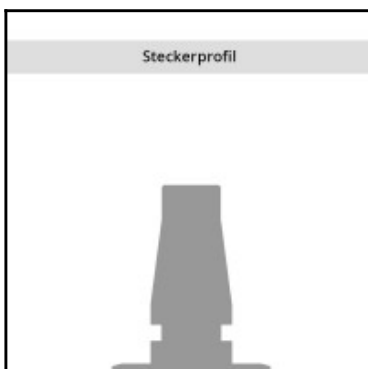
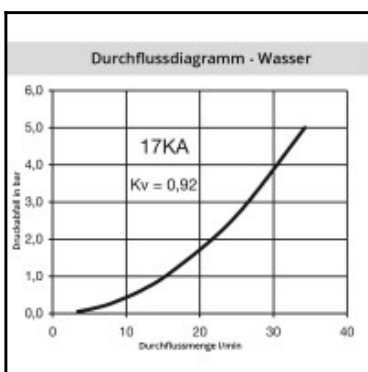
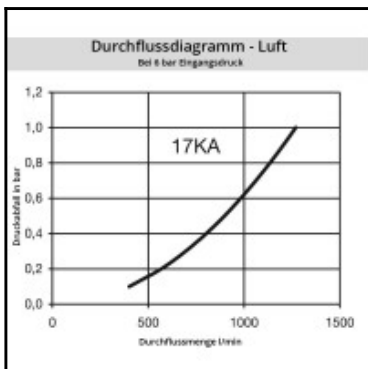
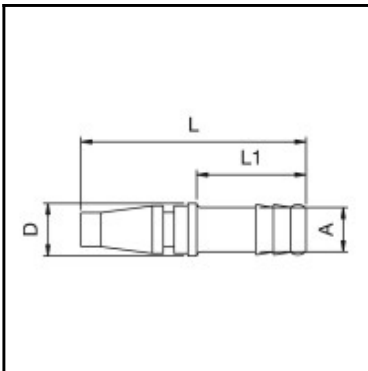


Datasheet of 17SFTF13SXN Plug with hose barb



Description

Plug straight-through, hose barb 13mm (1/2), nominal diameter 5, <35 bar, steel nickel plated

Brass/steel industrial coupling with English profile specifically suited to compressed air applications in industry. Coupling system with single-hand operation. UltraFlo valve for optimum flow and low pressure drop. Versatile due to slim design and light weight.

Details

Series:	17
Series long:	17SF
Bore in mm:	5
Bore area in mm²:	20
Advantages:	One-hand operation. Schlanke Bauweise, light weight. UltraFlo valve.
Working pressure:	35 bar maximum static working pressure with safety factor 4 to 1.
Working temperature:	-20°C up to +100°C (NBR) -40°C up to +120/150°C (EPDM) -15°C up to +200°C (FKM) depending on the medium.
Shut-Off:	Plug Straight-Through
Connection:	Hose barb 13mm LW(1/2")
Connection description:	Hose barb 13mm LW(1/2")
Connection type:	Hose barb
Material:	Steel nickel-plated
Material description:	Steel 9SMnPb28K 1.0718
Surface:	nickel plated
Weight in kg:	0,0225
Self-venting coupling:	No
Safety locking system:	No
Single-hand operation:	Yes
Two-hand operation:	No
Ball locking:	No
Pin lock:	No
Ultra-FLO-valve:	Yes
Vacuum suitable:	Yes
Water-resistant:	No
Flat-sealing:	No
Suitable breath / respiratory protection:	No
Pressure eliminator:	No
Hydraulics:	No
Pneumatics:	Yes
Standard product:	No
Mould coupling:	No

Dimensions