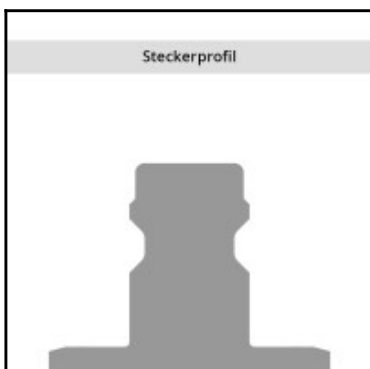
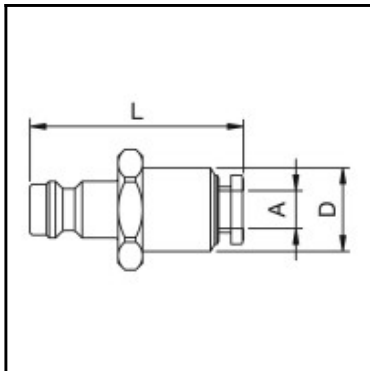


Datasheet of 21SFRP08MPN Plug with push-in fitting



Description

Plug straight-through, push-in fitting 8 mm, nominal diameter 5, <35 bar, brass nickel plated, seal NBR

Mini industrial coupling with the world's most popular profile in this nominal diameter. Above average flow performance for liquid and gaseous media. Coupling system with single-hand operation. Small dimensions and large band width in materials and valve variants.

Details

Series:	21
Series long:	21SF
Bore in mm:	5
Bore area in mm²:	20
Advantages:	One-hand operation. Small dimensions. All variants are compatible.
Compatibility:	RECTUS 90
Working pressure:	35 bar maximum static working pressure with safety factor 4 to 1.
Working temperature:	-20°C up to +100°C (NBR) -40°C up to +120/150°C (EPDM) -15°C up to +200°C (FKM) 0°C up to +316°C (FFKM) depending on the medium.
Shut-Off:	Plug Straight-Through
Connection:	Push-in fitting 8 mm outside calibrated
Connection description:	Push-in fitting for hose 8 mm
Connection type:	Hose barb
Material:	Brass nickel plated
Material description:	Brass CuZn39Pb3 2.0401 (except sleeve)
Seal description:	Nitrite-butadiene rubber
Surface:	nickel plated
Material seal:	Perbunan®
Weight in kg:	0,0232
Self-venting coupling:	No
Safety locking system:	No
Single-hand operation:	Yes
Two-hand operation:	No
Ball locking:	No
Pin lock:	No
Ultra-FLO-valve:	No
Vacuum suitable:	Yes
Water-resistant:	Yes
Flat-sealing:	No
Suitable breath / respiratory protection:	No
Pressure eliminator:	No
Hydraulics:	No
Pneumatics:	Yes
Standard product:	No
Mould coupling:	No

Dimensions

Connection A:	8 mm
L mm:	37
L1 mm:	15,4
SW mm:	17